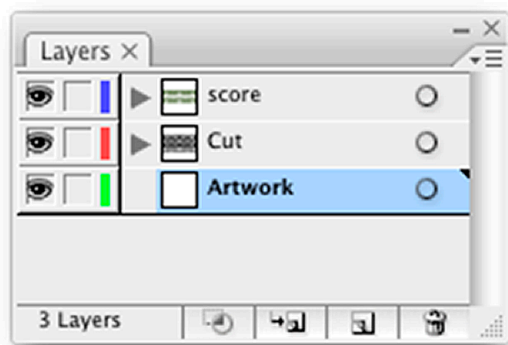
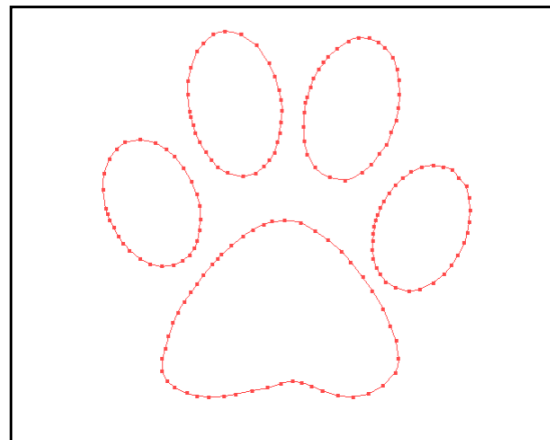


# Setting up files for I-cut

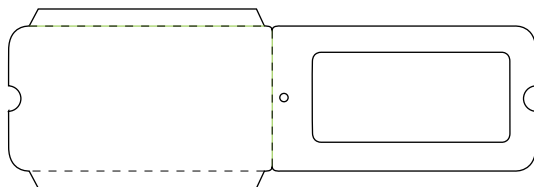
All cut files need to be created using Adobe Illustrator. Cuts are made along the path which must be closed, and set to 1/4 point stroke with no fill. The path should also have as few control points as possible. Cuts, scores and artwork must be placed on separate layers. The artwork should be designed with a 1/16" bleed to prevent any unwanted white edges. The I-cut system can knife cut or router depending on the substrate. Be aware that the router bit leaves an 1/8" radius on angled inside cuts. Contact your Merrill David project coordinator for the sizes and materials that can be cut.



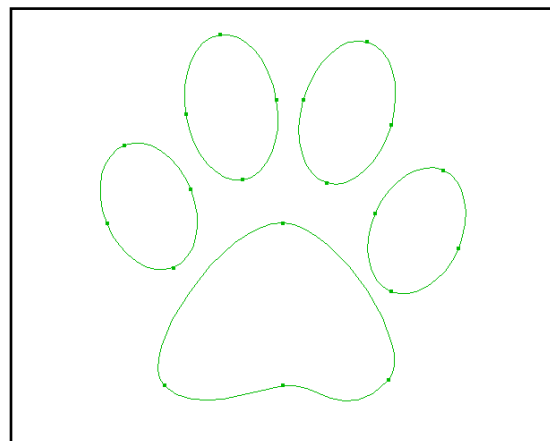
Cuts, scores and artwork should be placed on separate layers.



*Bad path: Too many control points*



1/4 point stroke no fill, with closed paths.



*Good path: Efficient use of control points*